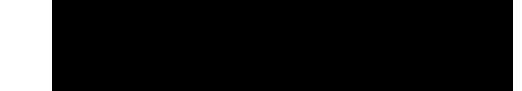
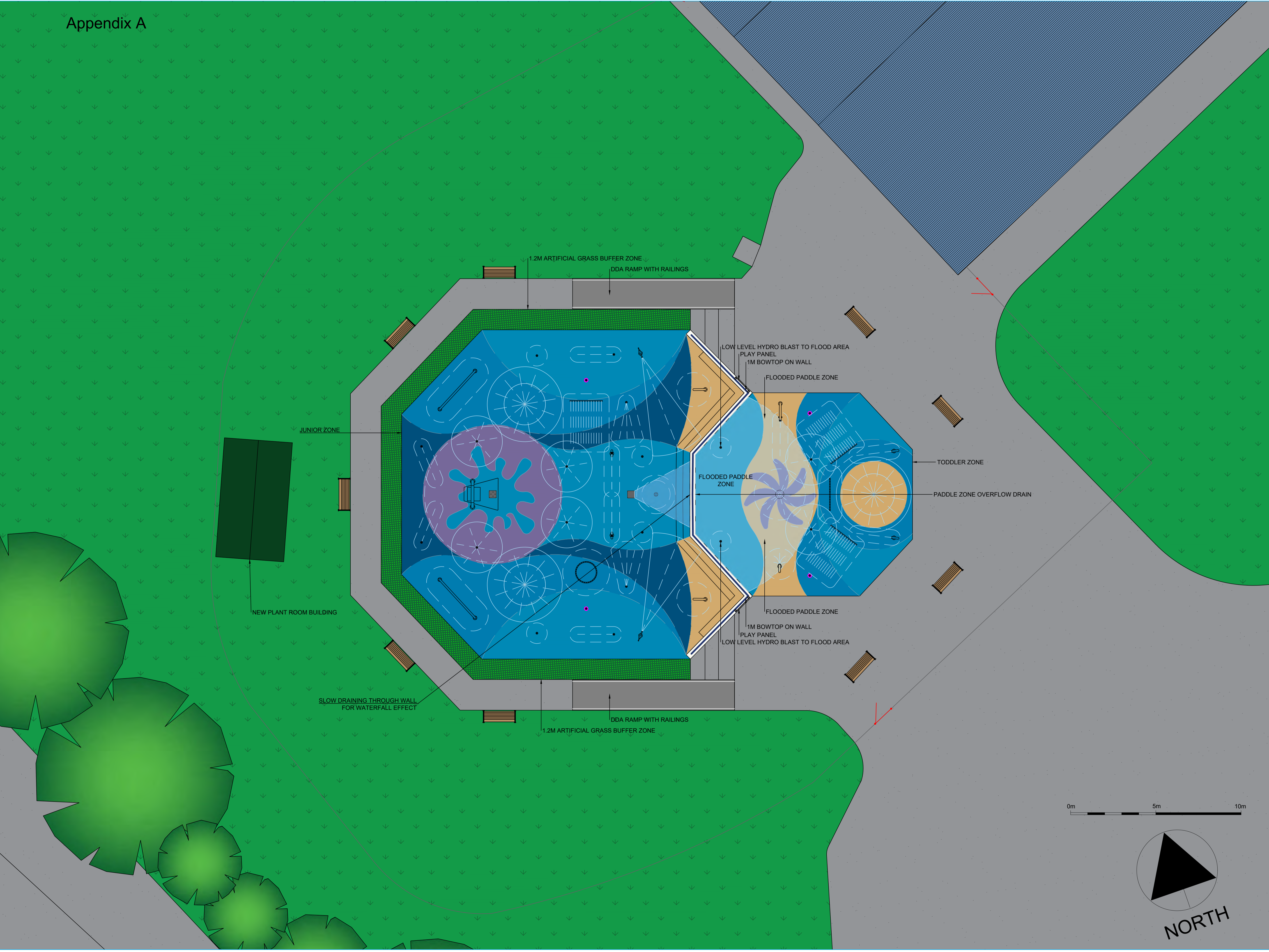


Appendix A

GENERAL NOTES

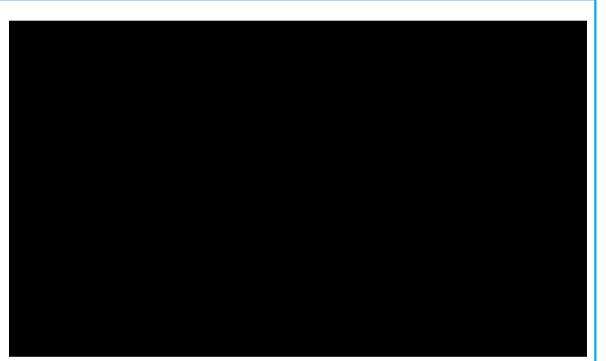
1. Refer to Architects and Structural Engineers drawings for details and specifications.
2. Dimensions to be checked on site before any works are put in hand or prefabricated.
3. Figured dimensions shown are in millimeters.
4. This drawing is to be read in conjunction with the relevant Technical Specifications and the Contractors working drawings.
5. For purpose of construction, this drawing must not be scaled. Only written or calculated dimensions should be used.
6. The position of all equipment/features is approximate as shown. The precise positions shall be agreed on site with other trades and Architects scaled layouts.
7. This is not an installation drawing. The contractor shall carry out his own design & installation drawings in accordance with all Tender contract documentation.



REV	DATE	DESCRIPTION
A	09.07.21	TENDER SUBMISSION

FOR TENDER

DO NOT SCALE FROM THIS DRAWING



Client
Harlow District Council

Job Title
Staple Tye Splash Park

Drawing Title
Option 2 - General Arrangement

Drawing Number: TS/HDC/ST/SP/OP2/001

Drawn by: JG Approved by: GS Rev: A

Scale: 1:100@A1 Date: 09.07.21