

Covid-19 Recovery Working Group

Tuesday 15th February 2022

CASES

- Case rate in England – 625.5 (665.3 yesterday)
- East of England – 701 (745.8)
- Essex – 563.6 (595.6)
- Harlow – 524.7 (556.8)
- Cambridge and Peterborough are the hotspots in East of England

N.B. Figures correct as of 15th February 2022

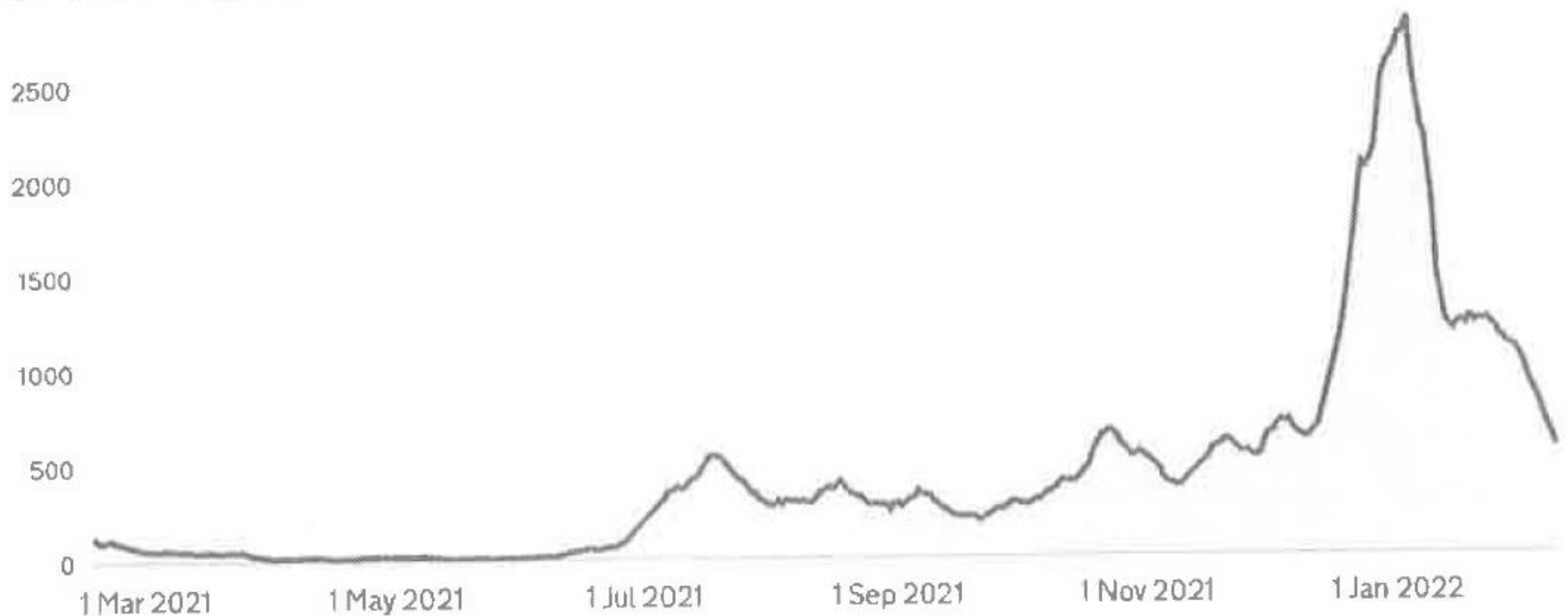
7-day case rates by specimen date

Rate of cases per 100,000 people in the rolling 7-day period ending on the dates shown.

7-day periods Data About

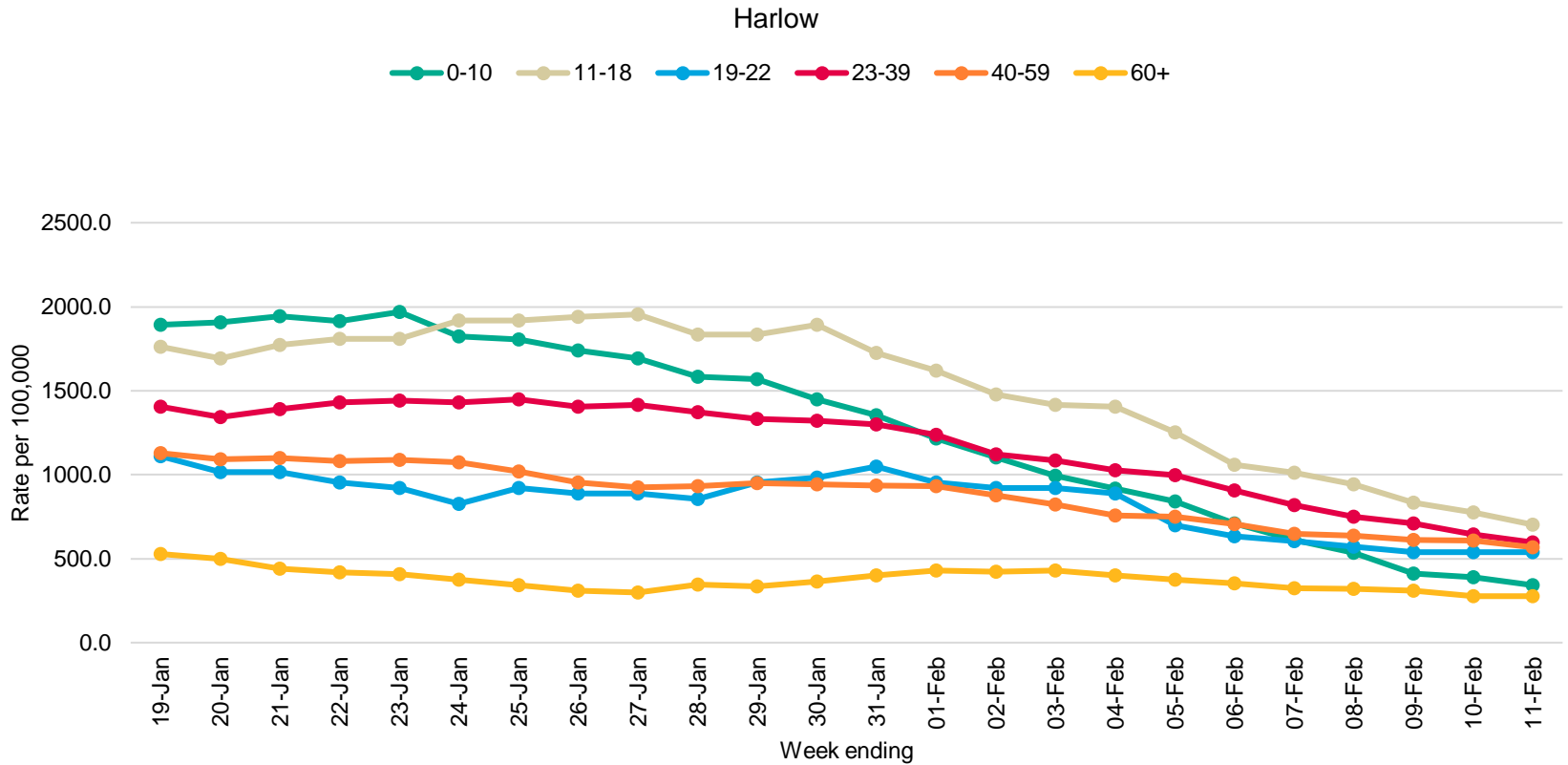
all 6m 3m 1m

Linear Log



— Rate of cases per 100,000 population in 7-day period

Case Rates by age group



VACCINATIONS

- 167,177 doses administered in Harlow (to 6th February)
 - 64,546 first doses (78% of over 12s; national 91%)
 - 59,785 second doses (72%; national 85%)
 - 42,846 booster doses (52%; national 66%)

HOSPITAL ADMISSIONS

- Nationally these have fallen 13% in the last week
- Essex – patient numbers falling
- PAH – patient numbers had risen to 74 in late January; now down to 60
- Only 2 PAH patients in intensive care