

# WORKFORCE STATS DASHBOARD

Q2 2024/25

HEADCOUNT **401**

FTE HEADCOUNT **347.90**

AGENCY HEADCOUNT **51**

LEAVERS **5**

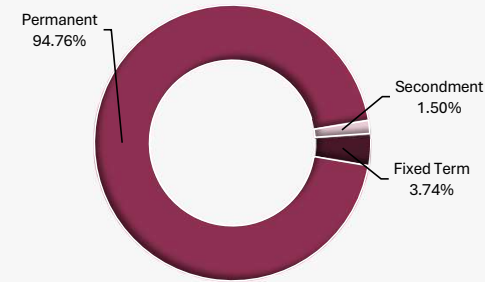
VACANCIES **49**

HEADCOUNT & FTE BY SERVICE

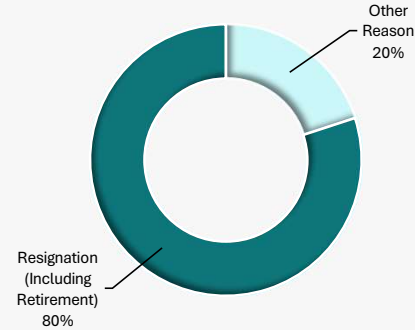


\*These charts exclude casual workers. The total casual headcount for quarter 2 is 80 workers

BREAKDOWN OF EMPLOYEE BASIS



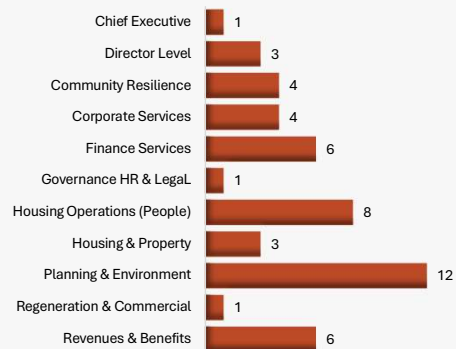
LEAVERS BY REASON



AGENCY HEADCOUNT BY SERVICE



VACANCIES PER SERVICE



# WORKFORCE STATS DASHBOARD

Q2 2024/25

SICKNESS OCCASSION **141**

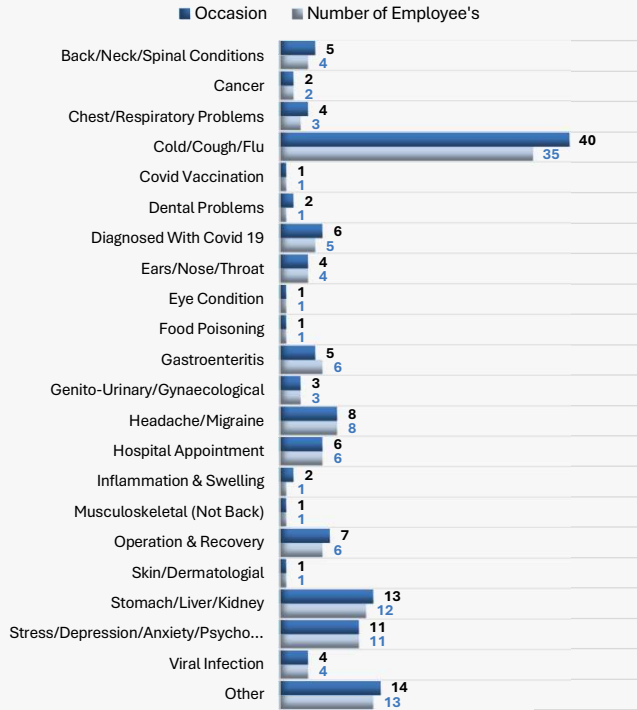
NUMBER OF EMPLOYEE'S SICK **107**

ABSENCE DAYS LOST **815.46**

SHORT TERM DAYS LOST **369.46**

LONG TERM DAYS LOST **446.00**

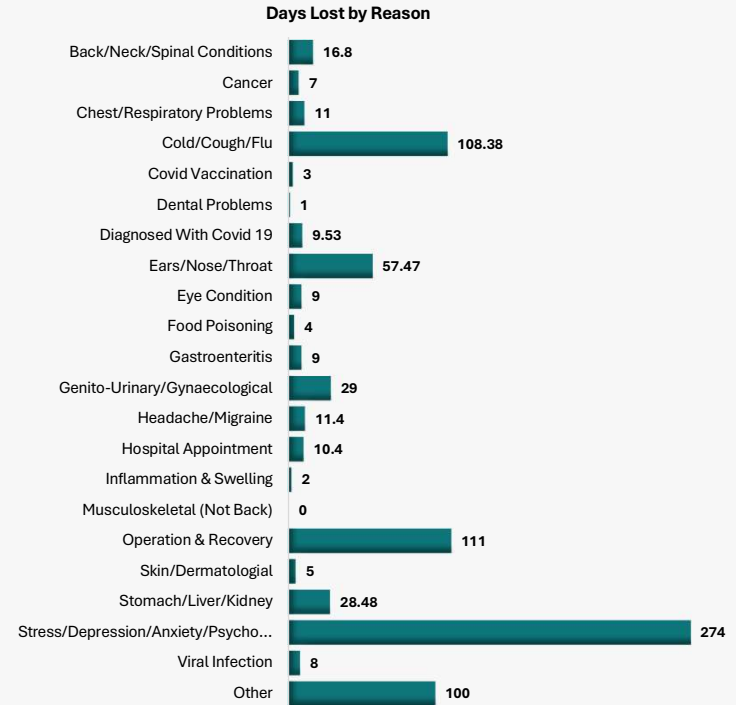
## SICKNESS ABSENCE OCCASSION & NUMBER OF EMPLOYEE'S SICK BY REASON



\*Sickness figures are correct at the day of calculation

\*Employees may have had more than one sickness absence occasion

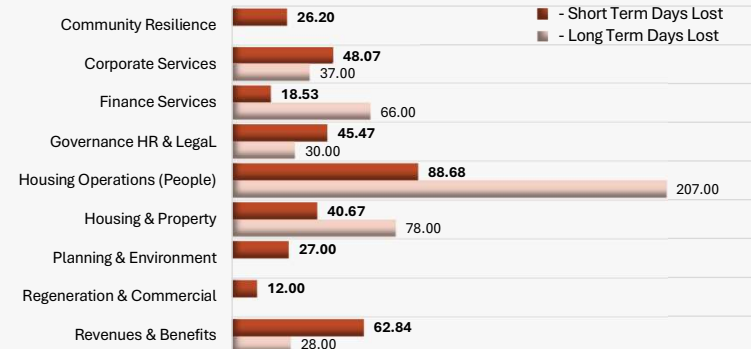
## SICKNESS ABSENCE DAYS LOST BY REASON



## SICKNESS ABSENCE DAYS LOST BY SERVICE



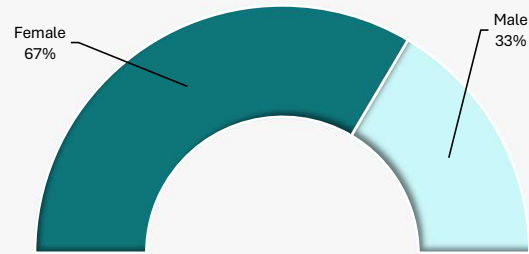
## SHORT & LONG TERM SICKNESS DAYS LOST BY SERVICE



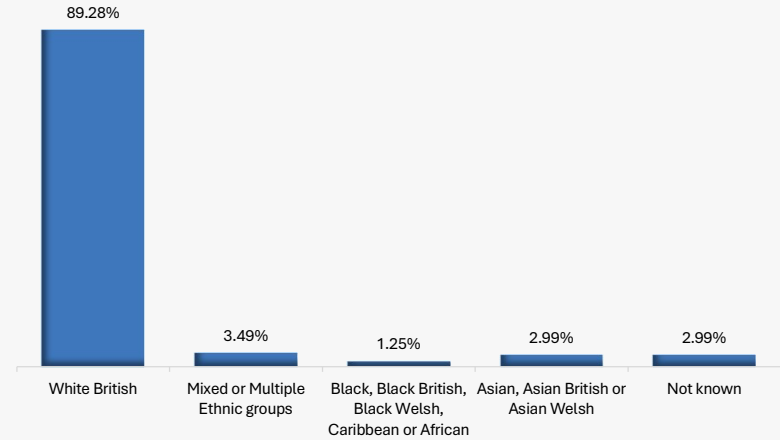
# WORKFORCE STATS DASHBOARD

Q2 2024/25

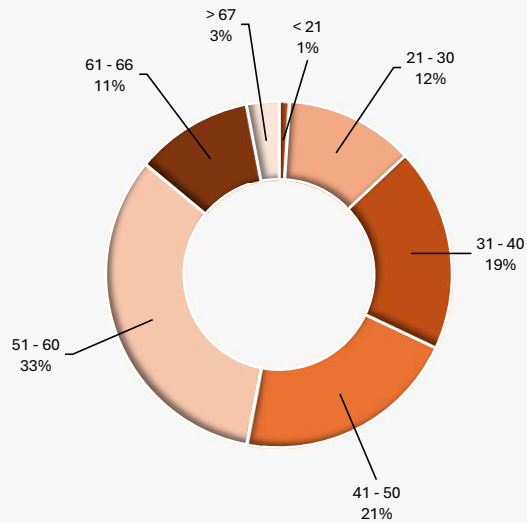
EMPLOYEE GENDER PROFILE



EMPLOYEE ETHNICITY PROFILE



EMPLOYEE AGE PROFILE



	Harlow Local Authority	
	count	%
All usual residents	93,330	100.0
Asian, Asian British or Asian Welsh	5,555	6.0
Black, Black British, Black Welsh, Caribbean or African	5,827	6.2
Mixed or Multiple ethnic groups	3,048	3.3
White	77,214	82.7
Other ethnic group	1,686	1.8